

KNOW YOUR SCHOOLS

2016-17



WISCONSIN RAPIDS PUBLIC SCHOOLS

510 Peach Street

Wisconsin Rapids, WI 54494-4663

715-424-6700

715-422-6070 (fax)

District Webpage: www.wrps.org

 Facebook: WRPSDistrict

 Twitter: @WRPSDistrict

*The Wisconsin Rapids Public Schools serve the
City of Wisconsin Rapids;
Villages of Biron, Rudolph, and Vesper;
Wood County Townships of Arpin, Grand Rapids,
Hansen, Rudolph, Saratoga, Seneca, Sigel, Sherry;
and Portage County Townships of
Carson, Grant, and Plover.*

MISSION STATEMENT

*Working together with home and community, we are
dedicated to providing the best education for every student,
enabling each to be a thoughtful, responsible contributor
to a changing world.*



Wisconsin Rapids Public Schools
510 Peach Street
Wisconsin Rapids, WI 54494

Greetings!

I am pleased to provide this information as it relates to various aspects of the Wisconsin Rapids Public Schools.

Whether you are an interested parent, student, citizen, employee, or other stakeholder, I would like to take this opportunity to thank you for reviewing this information to familiarize yourself more with our school district.

WRPS has a strong history of offering a wide variety of services to our students in order to meet their constantly changing needs. We continually strive to do better in serving them academically, physically, and socially. By bringing content, technology, and pedagogy together, we are building 21st Century learners who can compete globally. We strive to improve individual student growth by measuring student achievement and constantly evaluating our curriculum. Our district is committed to maximizing learner opportunities through the exploration of alternative and more efficient delivery of student programming.

Our state of the art facilities continue to be maintained in a manner which continually supports evolving student programs and activities. Should you ever wish to visit one of our schools and learn more about WRPS offerings, feel free to contact a building administrator to arrange for a visit.

Any time you have questions, suggestions, or concerns about our schools, please contact the appropriate individual or department listed in this brochure, or call 715-424-6700.

A handwritten signature in black ink that reads "Dr. Colleen Dickmann". The signature is written in a cursive, flowing style.

Dr. Colleen Dickmann
Superintendent

DID YOU KNOW...

The **Wisconsin Rapids Public Schools (WRPS)** encompasses the city of Wisconsin Rapids; the villages of Biron, Rudolph, Vesper; and all or portions of 11 surrounding townships. Serving as a unified school district, WRPS has a **student population of approximately 5,100**. WRPS offers half-day 4K programming and has six K-5 elementary schools, two elementary charter schools, one middle school (grades 6-7), one junior high school (grades 8-9), one senior high school (grades 10-12), one alternative high school (grades 9-12), and operates a virtual school program with an enrollment of over 225 students.



Our school system has earned a solid reputation as a progressive, professional organization, which has high student achievement and a low drop-out rate. Programs have been changed and continually evolve in order to best meet the needs of our students. In the fall of 2016, the WRPS Board of Education **approved an investment of \$8.4 million** in facility upgrades. Our staff members are life-long learners themselves, and they are continuously recognized by both state and national organizations and agencies for their professionalism and expertise.

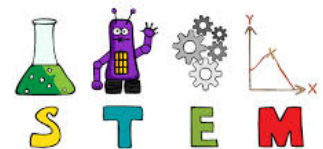
The Wisconsin Rapids **4K Community Collaborative Program** includes sections located in both public schools and community sites. All 4K teachers have a minimum of a bachelor's degree in education and are involved with continuing professional development related to the needs of the program.

The 4K program follows the Wisconsin Model Early Learning Standards. Classroom environments meet the standards of Early Childhood Environment Rating Scale (ECERS). Appropriate learning materials are available to all students regardless of location. Materials directly correlate with performance standard goals.

The 4K program is play-based. Within these play experiences; children are exposed to a literacy/print rich environment. They are provided opportunities for dialogue, learning through social interaction, dramatic play, listening to stories, and writing. A play-based program allows children to develop at individual rates. Teachers are able to differentiate instruction to meet the various needs of their learners. Research shows that play in early childhood is the best foundation for success in school. Play develops many skills that are necessary for children to learn to read and write for success in math and science. Play also develops behaviors that help children learn all school subjects.



Our **K-5 elementary schools** have a curriculum that emphasizes literacy skills. Teachers work to provide a strong basis in reading and writing to insure success at the secondary level and beyond. Critical thinking, creativity, communication skills, and technology integration are woven throughout the language arts, math, science and social studies areas. Science, Technology, Engineering and Math (STEM) projects are infused into the elementary curriculum to provide students with an early experience in engineering projects and exposure to STEM careers. Our District was paid a special visit by State Supt. Tony Evers during the 2016-17 school year as the Dept. of Public Instruction is intrigued by our progressive instruction in this discipline. In addition, students receive art, music and physical education classes weekly.



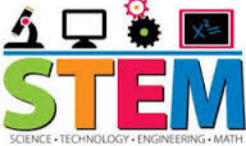
At the primary level, the District curriculum is also developmentally appropriate. This means that teachers meet each student where they are, and take them to their optimal learning level. Lessons address varied interests, needs and abilities. The development of each child's confidence as a learner is also an important part of the teaching and learning that occurs at the elementary level.

The **Wisconsin Rapids Area Middle School** serves the District's sixth and seventh grade students. Collaborative teaching teams work with groups of approximately 125 students to meet the unique academic, social, physical and emotional needs of young adolescents. Students have the opportunity to participate in a variety of

academic and co-curricular activities. The pre-teen years are filled with self-discovery and personal growth; therefore, our staff facilitates many different clubs, sports, leadership and volunteer experiences for students in addition to delivering consistent, content-based, academic standards.

East Junior High School provides an education for all 8th and 9th graders in the school district. Teachers, administrators, counselors and staff are dedicated to creating a rigorous academic environment, balanced with outstanding social, emotional, and wellness opportunities. Students are challenged to maximize their potential within a supportive and nurturing environment. A variety of extra-curricular activities are offered for students to explore and grow in many areas.

Lincoln High School (LHS) is a grade 10-12 comprehensive high school where all students are being prepared for college readiness and career success. LHS is proud to offer a strong curriculum, technology infused instruction, and approximately 170 courses to meet the diverse learning and career needs of all students. The curriculum includes a minimum of eleven advanced placement (AP) offerings, and a rich assortment of challenging courses in the career and technical education areas including Project Lead The Way engineering curriculum. The LHS world language department offers four languages (French, German, Japanese, and Spanish).



The fine arts are also a strong part of the curriculum at LHS. Students can choose from a variety of courses in the visual arts, music, and theatre/drama areas. Students from these three areas often compete on state and national levels to gain recognition for their efforts, accomplishments and areas of expertise. Also, LHS has a strong tradition of high-quality extra-curricular programs. Students have an opportunity to become involved in 21 interscholastic sports as well as more than 50 activities and clubs. LHS students have earned a high degree of respect for honors earned in regional, state and national competition. The LHS staff works hard to ensure that all graduating students possess the social and emotional skills necessary for a successful future. They developed the "PRIDE" initiative (**P**ersonal **R**esponsibility **I**n **D**eveloping **E**xcellence) to encourage and develop character excellence in our students. Students are expected to be respectful, responsible, and committed. Behavior support is available for those students who struggle with school expectations, and students who are making wise behavioral choices are recognized on a regular basis.



The District also serves students in grades 9-12 who require an alternative educational setting as opposed to a traditional school setting. **River Cities High School** helps to meet unique needs by providing an environment that promotes social, emotional, academic, and vocational growth and development of students most at-risk. Instead of lowering expectations, the alternative high school attempts to raise hope and redefine success among students by providing non-traditional approaches for students to meet their high school graduation requirements.



Lastly, WRPS offers a **virtual program** for families interested in on-line learning. This virtual school component offers families the option to learn in a self-paced environment and customize education to support student goals. Our virtual school students are welcome to participate in any combination of classes, field studies, and school activities including extra-curricular and sports. This option is a great solution for families who want to be totally involved in all aspects of their child(ren)'s education.



Wisconsin Rapids Public Schools
510 Peach Street
Wisconsin Rapids, WI 54494

BOARD OF EDUCATION



John A. Krings – President
 Mary A. Rayome – Vice President
 Larry Davis – Clerk; Katie Bielski-Medina – Treasurer
 Anne Lee, John Benbow, Jr., and Sandra Hett

ADMINISTRATION	
Colleen Dickmann, Ph.D.	Superintendent of Schools
Kathi Stebbins-Hintz, J.D.	Director of Instruction
Jennifer Wilhorn	Elementary Literacy Supervisor
Roxanne Filtz	Secondary Literacy Supervisor
Daniel Weigand	Director of Business Services
Matthew Green, Ed.D.	Director of Pupil Services
Steve Smith	Pupil Services Coordinator
Ryan Christianson, Ed.D.	Director of Human Resources
Phillip Bickelhaupt	Director of Technology
Ed Allison	Director of Buildings & Grounds
Lizzie Severson, RD	Director of Food Services

Building	Grades	# Stdts	Principal	Phone
Grant Elementary	4K-5	258	Mr. Tim Bruns	715-424-6766
Grove Elementary	EC-5	266	Ms. Tina Wallner	715-424-6769
Howe Elementary	K-5	334	Ms. Tina Miller	715-424-6772
Mead Elementary	EC-5	390	Ms. Margie Dorshorst	715-424-6777
THINK Academy	4K-5	154	Ms. Roxanne Filtz	715-424-6784
Vesper Comm. Academy	K-5	76	Ms. Jennifer Wilhorn	715-424-6786
Washington Elementary	K-5	313	Ms. Kelly Schaeffer	715-424-6788
Woodside Elementary	EC-5	367	Mr. Paul Mann	715-424-6793
4K Off-Site Locations	4K	177	Ms. Kelly Schaeffer	715-424-6788
WR Area Middle School	6-7	670	Ms. Tracy Ginter	715-424-6740
East Jr. High School	8-9	668	Mr. Kevin Yeske	715-424-6730
Lincoln High School	10-12	1,108	Mr. Ronald Rasmussen	715-424-6750
River Cities High School	9-12	75	Mr. Matthew Green	715-424-6798
Virtual School Program	4K-12	230	Mr. Ryan Christianson/Mr. Tim Bruns	715-424-6710

SCHOOL CALENDAR 2016-17

September 1	<i>First Day for Students</i>	March 3	<i>Recordkeeping/Prof Dev Day – No School</i>
September 5	<i>Labor Day – No School</i>	March 27-31	<i>Spring Break</i>
October 3	<i>Professional Dev Day – No School</i>	April 14	<i>No School Day</i>
October 28	<i>Autumn Break – No School</i>	May 29	<i>Memorial Day – No School</i>
November 7	<i>Professional Dev Day – No School</i>	June 2	<i>Last Day for Students (half-day)</i>
Nov 24-25	<i>Thanksgiving Vacation – No School</i>		
Dec 26-30	<i>Winter Break – No School</i>		<i>*December 2 – Elementary Prof Day</i>
January 19-20	<i>Recordkeeping/Prof Dev Day – No School</i>		<i>No School – Elementary Only</i>



Enrollment History (DPI Third Friday):

09-10	10-11	11-12	12-13	13-14	14-15	15-16	16-17
5,589	5,539	5,370	5,325	5,275	5,199	5,214	5,086

Free/Reduced Enrollment Percentage:

2010 – 41% · 2011 – 42% · 2012 – 44% · 2013 – 45% · 2014 – 43% · 2015 – 42% · 2016 – 41%

Ethnic Breakdown (2016-17):

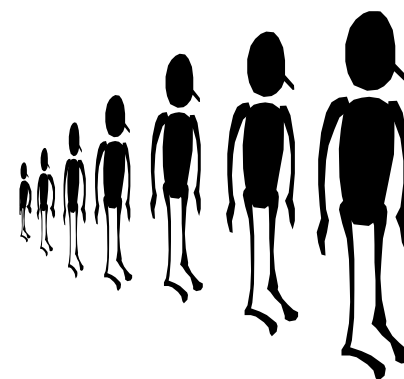
Amer. Indian – 1.2% Asian – 4.6% Black – 1.9% Hispanic – 4.7% Multi-Racial – 2.3% White – 85.3%

Graduating Seniors’ Post High School Plans (Class of 2016):

4-Year College	Tech College	Military	Employment	Seeking Employment/Other
41.8%	33.7%	3.8%	9.0%	11.7%

PUPIL SERVICES/SPECIAL NEEDS PROGRAMS (2016-17 Enrollment)			
Cognitive Disabilities	61	Speech/Language	138
Emotional Disabilities	98	Homebound	4
Learning Disabilities	173	Visually Impaired	4
Orthopedic Impairment	5	Hearing Impaired	5
Limited English Proficiency	96	Autism	62
Traumatic Brain Injury	1	Other Health Impaired	127
Significant Dev. Delay	41	<i>An Early Childhood program is also available.</i>	

Personnel (Number of Employees)	Number	FTE
Teachers, Librarians, Social Workers	363	358.66
Administrators	24	24.0
Psychologists	6	6.0
Clerical/Aides	212	105.27
Custodial/Maintenance	46	45.63
Food Service	34	16.55
Nurses	3	2.1
Van Drivers	5	2.5
Technology Support	8	8.0
TOTAL	701	568.71



Financial Summary 2016-17 Budget	
Salaries	\$27,553,171.00
Employee Benefits	13,546,948.00
Purchased Services	9,097,663.00
Non-Capital Objects	1,963,803.00
Capital Objects	471,581.00
Debt Retirement	226,780.00
District Insurance	460,896.00
Transfer to Other Funds	7,083,126.00
Other	69,065.00
TOTAL	\$60,473,033.00

Transportation (Public and Parochial) of students is contracted with Lamers Bus Lines and Safe-Way Bus Transit. Approximately 2,680 young people are transported to and from school, traveling over 1.3 million miles each year at a cost of \$3,388,438.



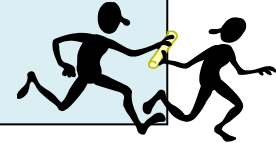
Annual Cost Per Student: \$1,264 Per Vehicle: \$67,769

SCHOOL PERFORMANCE REPORT

Each year, public school districts in Wisconsin are required to prepare a school performance report outlining the previous year's success in a variety of areas. Specifically, districts are to report data in comparison with other districts in their athletic conference in the areas of *assessment, dropout rate, attendance, retention, graduation rate, habitual truancy, extra/co-curricular activities, community activities, Advanced Placement (AP) participation, post-graduation plans, suspensions, expulsions, staffing, financial data, etc.*

Individual School and District Report Cards and other school year information may be found by going directly to the Department of Public Instruction's [WISEdash](http://wisedash.dpi.wi.gov) website:

<http://wisedash.dpi.wi.gov/Dashboard/portalHome.jsp>



Expenditures Per Student	WRPS	State
2009-10	\$12,225	\$12,087
2010-11	\$11,762	\$12,462
2011-12	\$12,497	\$11,802
2012-13	\$12,394	\$11,762
2013-14	\$11,890	\$11,970
2014-15	\$11,610	\$12,250



Equalized Valuation		Tax Levy	
2012	\$2,142,632,655	2012	\$20,130,033
2013	\$2,120,646,624	2013	\$21,199,870
2014	\$2,101,846,262	2014	\$21,950,098
2015	\$2,121,372,523	2015	\$22,170,691
2016	\$2,146,170,757	2016	\$22,616,310
2017	\$2,132,516,781	2017	\$23,069,760

Equalized Tax Rate (Per \$1,000 of Equalized Value) Proposed:

	10-11	11-12	12-13	13-14	14-15	15-16	16-17
General Fund	\$7.87	\$4.34	\$9.99	\$10.43	\$10.11	\$10.20	\$9.83
Debt Retirement	1.20	5.05	.00	.01	.15	.23	.92
Community Service	.19	.00	.00	.00	.19	.11	.07
TOTAL Tax Rate	\$9.26	\$9.39	\$9.99	\$10.44	\$10.45	\$10.54	\$10.82

Revenue Sources	09-10	10-11	11-12	12-13	13-14	14-15	15-16
Local Sources	32.7%	31.6%	33.4%	34.6%	35.7%	36.3%	36.9%
State/Federal	67.3%	68.4%	66.6%	65.4%	64.3%	63.7%	63.1%

Municipality	2016 Valuation	2016 Tax Levy	Ratio
City of Wisconsin Rapids	\$968,432,200	\$10,476,585	45.4%
Town of Arpin	340,915	3,688	0.02%
Town of Grand Rapids	476,881,900	5,158,952	22.4%
Town of Hansen	28,623,216	309,649	1.3%
Town of Rudolph	64,988,200	703,048	3.05%
Town of Saratoga	172,421,831	1,865,275	8.1%
Town of Seneca	49,957,961	540,450	2.4%
Town of Sherry	7,830,649	84,713	0.4%
Town of Sigel	69,128,000	747,833	3.2%
Village of Biron	67,918,300	734,746	3.2%
Village of Rudolph	27,728,600	299,971	1.3%
Village of Vesper	25,491,800	275,773	1.2%
Town of Carson (Portage County)	7,174,985	77,620	0.3%
Town of Grant (Portage County)	135,066,807	1,461,165	6.3%
Town of Plover (Portage County)	30,531,417	330,292	1.43%
TOTALS	\$2,132,516,781	\$23,069,760	100.0%

Do you have a question? Please call:

Assessment	<i>Kathi Stebbins-Hintz</i>	715-424-6721
Athletics – HIGH School	<i>John Frizzell (gr 9-12)</i>	715-424-6760
Athletics – JR. HIGH School	<i>John Frizzell (gr 9-12)</i>	715-424-6760
Athletics – MIDDLE School	<i>Chris Feidt (gr 6-8)</i>	715-424-6730
ATOD Prevention Coordinator	<i>Matthew Green</i>	715-424-6724
Attendance Line	<i>District Wide</i>	715-424-6765
Budget/Finance	<i>Dan Weigand</i>	715-424-6705
Buildings and Grounds	<i>Ed Allison</i>	715-424-6718
Computer Technology/IT Department	<i>Phil Bickelhaupt</i>	715-424-6715
Curriculum Standards and Instruction	<i>Kathi Stebbins-Hintz</i>	715-424-6721
Food Service	<i>Lizzie Severson</i>	715-424-6703
Four-Year Old Kindergarten	<i>Kelly Schaeffer</i>	715-424-6721
Gifted & Talented Educational Svcs	<i>Tina Wallner</i>	715-424-6769
Homeless Liaison	<i>Heather Lisitza</i>	715-424-6735
Human Resources	<i>Ryan Christianson</i>	715-424-6710
Professional Development	<i>Kathi Stebbins-Hintz</i>	715-424-6721
Special Education/Section 504/Pupil Svcs	<i>Matthew Green</i>	715-424-6724
Superintendent	<i>Colleen Dickmann</i>	715-424-6701
Title VII Indian Education Coordinator	<i>Matthew Green</i>	715-424-6724
Transportation/Buses	<i>Jody Gruber</i>	715-424-6704
Virtual Program	<i>Ryan Christianson</i>	715-424-6710



QUICK FACTS

- South Wood County area **population** = 45,759
- WRPS District “**Exceeds Expectations**” on last published School Report Card and had **highest score** in Wisconsin Valley Conference and Wood County
- Number of WRPS teachers winning the **Kohl Fellowship Award** since 1991 = 53
- Lincoln High School was **named to** the College Board’s 5th Annual **AP® District Honor Roll**
- Number of WRPS students winning the **Kohl Excellence Award** since 1990 = 19; and the **Kohl Initiative Award** since 1998 = 4
- Lincoln High School offers **Transcribed Credit** through MSTC, and **Dual Enrollment Credit** through UW-Marshfield/Wood County
- Over the past 2 years, Lincoln High students earned **125 college credits** at a **savings of \$14,000**
- Number of WRPS teachers with **National Board Certification** Designation = 7
- Grove, Howe, and Mead Received the Wisconsin **School of Recognition Award** numerous years in a row
- Howe Elementary recognized as a **Spotlight School** for **multiple years** by Dept. of Public Instruction
- In Fall, 2016, the Board of Education approved to invest **\$8.4 million** into a “Phase 1” **facility upgrade** project
- Amount District **secured in various grant funding** in 2015-16 = **\$4,663,066.73**
- Each year WRPS students and staff **give generously** by donating large amounts of **food products, dollars, and volunteer time** to help the less fortunate in our community

◆ DISTRICT BELIEFS ◆

WE BELIEVE...*each student is the first consideration of the educational process.*

WE BELIEVE...*all students can learn.*

WE BELIEVE...*learning is a life-long process.*

WE BELIEVE...*in a safe, caring, and respectful learning environment.*

WE BELIEVE...*all students should become effective citizens of the community, state, nation, and the world.*

WE BELIEVE...*meaningful home, school, and community involvement is vital to continuous improvement.*



The Board of Education of the Wisconsin Rapids Public Schools offers fair and equal employment and learning opportunities, and prohibits discrimination. Properly trained and qualified personnel will assist the Board by developing, implementing, and monitoring procedures related to nondiscrimination practices. No student, employee or applicant will be discriminated against on the basis of age, race, creed, religion, disability, marital or parental status, gender, sexual orientation, gender identity, transgender status, national origin, ancestry, citizenship, arrest record, pregnancy, membership in the national guard, state defense force or any other reserve component of the military forces of the United States or Wisconsin, or use or nonuse of lawful products off District premises and away from District-sponsored activities, as required by law.