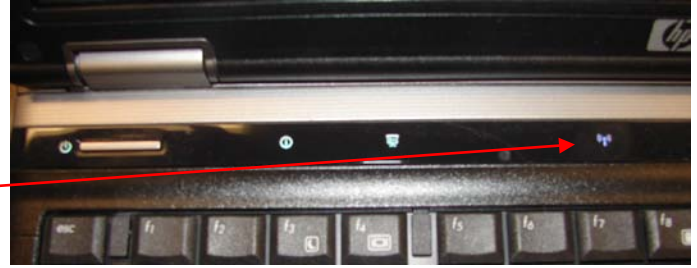



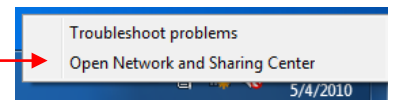
How To Connect to WRSGuest wireless using Windows 7

1. Be sure the wireless is enabled on your laptop. (In this example, after enabling the wireless card, the wireless button on this laptop will light up blue indicating the wireless card is turned on.) This may be different on each computer, if you are not sure, be sure to refer to your owner's manual.

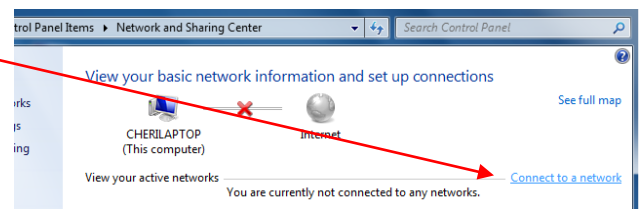


2. Once enabled, you will need to connect to our wireless network. Start by **right clicking** the **Wireless Icon**  in the system tray (located on the bottom right of the desktop).

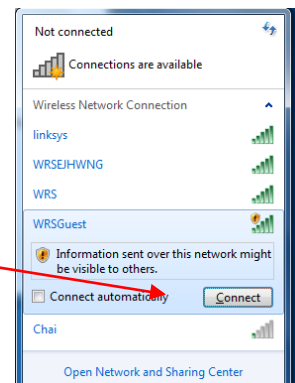
3. Select the option **Open Network and Sharing Center**.



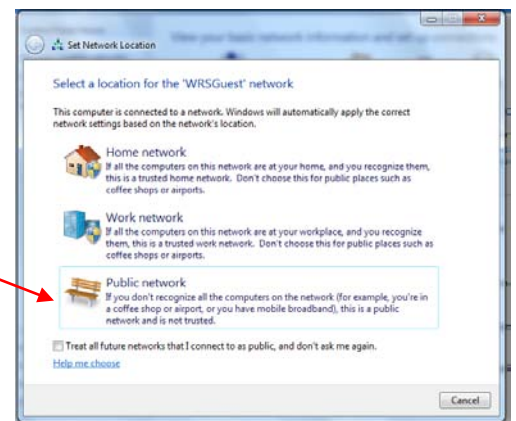
4. Select the option **Connect to a network**



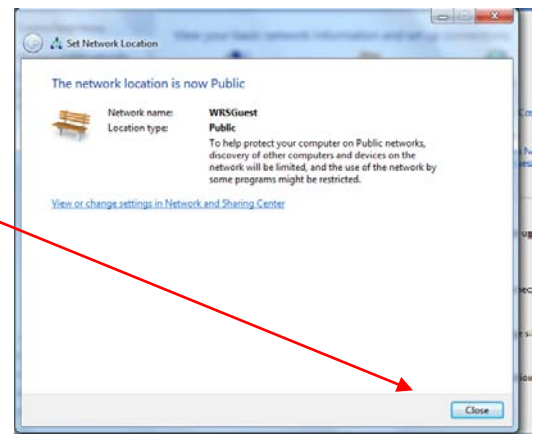
5. Locate the **WRSGuest** network from the options shown, click that option and click **Connect**.



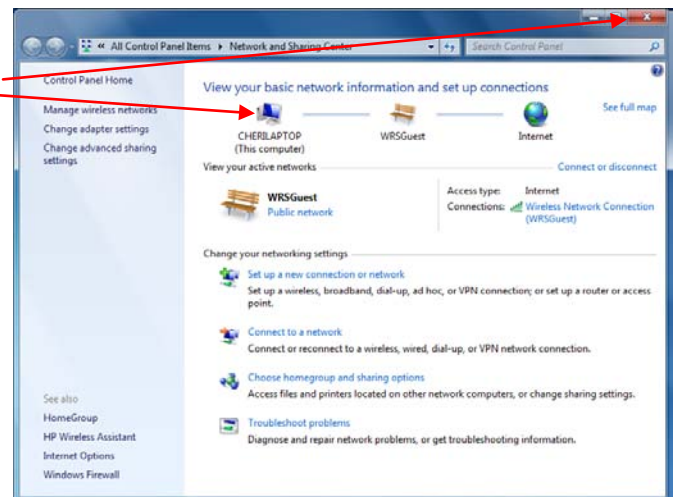
6. Select the **Public Network** option.



7. Choose the **Close** option.



8. When the following window shows you have a working connection, you may exit the screen.



9. Once you open your Internet browser (ie Internet Explorer, Firefox, Safari) the page will show a website error. Choose **Continue to this website** and you will be redirected to a web page that requires your credentials to authenticate to a guest Internet only network.

Please keep in mind:

- You will not be able to print.
- You will not have your home directory or other network drives mapped for you.
- You can access your network drives via Remote Access.
- You can access your email through webmail.

