

# KNOW YOUR SCHOOLS

2015-16



## WISCONSIN RAPIDS PUBLIC SCHOOLS

510 Peach Street

Wisconsin Rapids, WI 54494-4663

715-424-6700

715-422-6070 (fax)

District Webpage: [www.wrps.org](http://www.wrps.org)

 Facebook: WRPSDistrict

 Twitter: @WRPSDistrict

*The Wisconsin Rapids Public Schools serve the  
City of Wisconsin Rapids;  
Villages of Biron, Rudolph, and Vesper;  
Wood County Townships of Arpin, Grand Rapids,  
Hansen, Rudolph, Saratoga, Seneca, Sigel, Sherry;  
and Portage County Townships of  
Carson, Grant, and Plover.*

### **MISSION STATEMENT**

*Working together with home and community, we are  
dedicated to providing the best education for every student,  
enabling each to be a thoughtful, responsible contributor  
to a changing world.*



Wisconsin Rapids Public Schools  
510 Peach Street  
Wisconsin Rapids, WI 54494

Greetings!

I am pleased to provide this information as it relates to various aspects of the Wisconsin Rapids Public Schools.

Whether you are an interested parent, student, citizen, employee, or other stakeholder, I would like to take this opportunity to thank you for reviewing this information to familiarize yourself more with our school district.

WRPS has a strong history of offering a wide variety of services to our students in order to meet their constantly changing needs. We continually strive to do better in serving them academically, physically, and socially. By bringing content, technology, and pedagogy together, we are building 21<sup>st</sup> Century learners who can compete globally. We strive to improve individual student growth by measuring student achievement and constantly evaluating our curriculum. Our district is committed to maximizing learner opportunities through the exploration of alternative and more efficient delivery of student programming.

Our state of the art facilities continue to be maintained in a manner which continually supports evolving student programs and activities. Should you ever wish to visit one of our schools and learn more about WRPS offerings, feel free to contact a building administrator to arrange for a visit.

Any time you have questions, suggestions, or concerns about our schools, please contact the appropriate individual or department listed in this brochure, or call 715-424-6700.

A handwritten signature in black ink that reads "Dr. Colleen Dickmann". The signature is written in a cursive, flowing style.

Dr. Colleen Dickmann  
Superintendent

## DID YOU KNOW...

The **Wisconsin Rapids Public Schools (WRPS)** encompasses the city of Wisconsin Rapids; the villages of Biron, Rudolph, Vesper; and all or portions of 11 surrounding townships. Serving as a unified school district, WRPS has a student population of approximately 5,300. WRPS offers half-day 4K programming and has six K-5 elementary schools, two elementary charter schools, one middle school (grades 6-7), one junior high school (grades 8-9), one senior high school (grades 10-12), one alternative high school (grades 9-12), and operates a virtual school program with an enrollment of over 200 students. The school system has earned a solid reputation as a progressive, professional organization, which has high student achievement and a low drop-out rate. Programs have been changed and continually evolve in order to best meet the needs of our students. Staff members are continuously recognized by both state and national organizations and agencies for their professionalism and expertise.



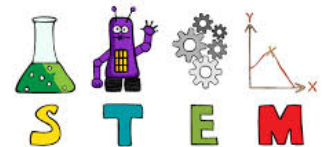
The Wisconsin Rapids **4K Community Collaborative Program** includes sections located in both public schools and community sites. All 4K teachers have a minimum of a bachelor's degree in education and are involved with continuing professional development related to the needs of the program. Ratios are kept to 17:2 with the second adult being a teacher's educational assistant.

The 4K program follows the Wisconsin Model Early Learning Standards. Classroom environments meet the standards of Early Childhood Environment Rating Scale (ECERS). Appropriate learning materials are available to all students regardless of location. Materials directly correlate with performance standard goals.

The 4K program is play-based. Within these play experiences; children are exposed to a literacy/print rich environment. They are provided opportunities for dialogue, learning through social interaction, dramatic play, listening to stories, and writing. A play-based program allows children to develop at individual rates. Teachers are able to differentiate instruction to meet the various needs of their learners. Research shows that play in early childhood is the best foundation for success in school. Play develops many skills that are necessary for children to learn to read and write for success in math and science. Play also develops behaviors that help children learn all school subjects.



Our **K-5 elementary schools** have a curriculum that emphasizes literacy skills. Teachers work to provide a strong basis in reading and writing to insure success at the secondary level and beyond. Critical thinking, creativity, communication skills, and technology integration are woven throughout the language arts, math, science and social studies areas. Science, Technology, Engineering and Math (STEM) projects are infused into the elementary curriculum to provide students with an early experience in engineering projects and exposure to STEM careers. In addition, students receive art, music and physical education classes weekly.

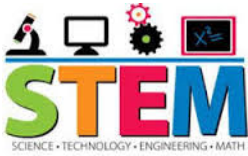


At the primary level, the District curriculum is also developmentally appropriate. This means that teachers meet each student where they are, and take them to their optimal learning level. Lessons address varied interests, needs and abilities. The development of each child's confidence as a learner is also an important part of the teaching and learning that occurs at the elementary level.

The **Wisconsin Rapids Area Middle School** serves the District's sixth and seventh grade students. Collaborative teaching teams work with groups of approximately 125 students to meet the unique academic, social, physical and emotional needs of young adolescents. Students have the opportunity to participate in a variety of academic and co-curricular activities. The pre-teen years are filled with self-discovery and personal growth; therefore, our staff facilitates many different clubs, sports, leadership and volunteer experiences for students in addition to delivering consistent, content-based, academic standards.

**East Junior High School** provides an education for all 8th and 9th graders in the school district. Teachers, administrators, counselors and staff are dedicated to creating a rigorous academic environment, balanced with outstanding social, emotional, and wellness opportunities. Students are challenged to maximize their potential within a supportive and nurturing environment. A variety of extra-curricular activities are offered for students to explore and grow in many areas.

**Lincoln High School (LHS)** is a grade 10-12 comprehensive high school where all students are being prepared for college readiness and career success. LHS is proud to offer a strong curriculum, technology infused instruction, and approximately 170 courses to meet the diverse learning and career needs of all students. The curriculum includes a minimum of eleven advanced placement (AP) offerings, and a rich assortment of challenging courses in the career and technical education areas including Project Lead The Way engineering curriculum. The LHS world language department offers four languages (French, German, Japanese, and Spanish).



The fine arts are also a strong part of the curriculum at LHS. Students can choose from a variety of courses in the visual arts, music, and theatre/drama areas. Students from these three areas often compete on state and national levels to gain recognition for their efforts, accomplishments and areas of expertise. Also, LHS has a strong tradition of high-quality extra-curricular programs. Students have an opportunity to become involved in 21 interscholastic sports as well as more than 50 activities and clubs. LHS students have earned a high degree of respect for honors earned in regional, state and national competition. The LHS staff works hard to ensure that all graduating students possess the social and emotional skills necessary for a successful future. They developed the "PRIDE" initiative (Personal Responsibility In Developing Excellence) to encourage and develop character excellence in our students. Students are expected to be respectful, responsible, and committed. Behavior support is available for those students who struggle with school expectations, and students who are making wise behavioral choices are recognized on a regular basis.



The District also serves students in grades 9-12 who require an alternative educational setting as opposed to a traditional school setting. **River Cities High School** helps to meet unique needs by providing an environment that promotes social, emotional, academic, and vocational growth and development of students most at-risk. Instead of lowering expectations, the alternative high school attempts to raise hope and redefine success among students by providing non-traditional approaches for students to meet their high school graduation requirements.



Lastly, WRPS offers a **virtual program** for families interested in on-line learning. This virtual school component offers families the option to learn in a self-paced environment and customize education to support student goals. Our virtual school students are welcome to participate in any combination of classes, field studies, and school activities including extra-curricular and sports. This option is a great solution for families who want to be totally involved in all aspects of their child(ren)'s education.



Wisconsin Rapids Public Schools  
510 Peach Street  
Wisconsin Rapids, WI 54494

# BOARD OF EDUCATION



John A. Krings – President  
Mary A. Rayome – Vice President  
Larry Davis – Clerk; Katie Bielski-Medina – Treasurer  
Anne Lee, John Benbow, Jr., and Sandra Hett

<b>ADMINISTRATION</b>	
<b>Colleen Dickmann, Ph.D.</b>	Superintendent of Schools
<b>Kathi Stebbins-Hintz</b>	Director of Instruction
<b>Jennifer Wilhorn</b>	Elementary Literacy Supervisor
<b>Roxanne Filtz</b>	Secondary Literacy Supervisor
<b>Daniel Weigand</b>	Director of Business Services
<b>Glenn Haupt</b>	Director of Pupil Services
<b>Matthew Green</b>	Assistant Director of Pupil Services
<b>Ryan Christianson</b>	Director of Human Resources
<b>Phillip Bickelhaupt</b>	Director of Technology
<b>Ed Allison</b>	Director of Buildings & Grounds
<b>Lizzie Severson</b>	Director of Food Services

<b>Building</b>	<b>Grades</b>	<b># Stdts</b>	<b>Principal</b>	<b>Phone</b>
Grant Elementary	4K-5	220	Mr. Tim Bruns	715-424-6766
Grove Elementary	EC-5	282	Ms. Tina Wallner	715-424-6769
Howe Elementary	K-5	345	Mr. Matt Renwick	715-424-6772
Mead Elementary	EC-5	419	Ms. Margie Dorshorst	715-424-6777
THINK Academy	4K-5	155	Ms. Roxanne Filtz	715-424-6784
Vesper Comm. Academy	K-5	87	Ms. Jennifer Wilhorn	715-424-6786
Washington Elementary	K-5	316	Ms. Kelly Schaeffer	715-424-6788
Woodside Elementary	EC-5	369	Mr. Paul Mann	715-424-6793
EC/4K Off-Site Locations	4K	195	Ms. Kelly Schaeffer	715-424-6788
WR Area Middle School	6-7	679	Ms. Tracy Ginter	715-424-6740
East Jr. High School	8-9	723	Mr. Kevin Yeske	715-424-6730
Lincoln High School	10-12	1,126	Mr. Ronald Rasmussen	715-424-6750
River Cities High School	9-12	92	Ms. Kathi Stebbins-Hintz	715-424-6798
Virtual School Program	4K-12	206	Mr. Ryan Christianson	715-424-6710

## SCHOOL CALENDAR 2015-16

September 1	<i>First Day for Students</i>	March 4	<i>Recordkeeping/Prof Dev Day – No School</i>
September 7	<i>Labor Day – No School</i>	March 21-25	<i>Spring Break</i>
September 28	<i>Professional Dev Day – No School</i>	May 30	<i>Memorial Day – No School</i>
October 30	<i>Autumn Break – No School</i>	June 2	<i>Last Day for Students (half-day)</i>
November 2	<i>Professional Dev Day – No School</i>		
Nov 26-27	<i>Thanksgiving Vacation – No School</i>		
Dec 24-Jan 1	<i>Winter Break – No School</i>		
January 21-22	<i>Recordkeeping/Prof Dev Day – No School</i>		



**Enrollment History (DPI Third Friday):**

08-09	09-10	10-11	11-12	12-13	13-14	14-15	15-16
5,652	5,589	5,539	5,370	5,325	5,275	5,199	5,214

**Free/Reduced Enrollment Percentage:**

2010 – 41% · 2011 – 42% · 2012 – 44% · 2013 – 45% · 2014 – 43% · 2015 – 42%

**Ethnic Breakdown (2015-16):**

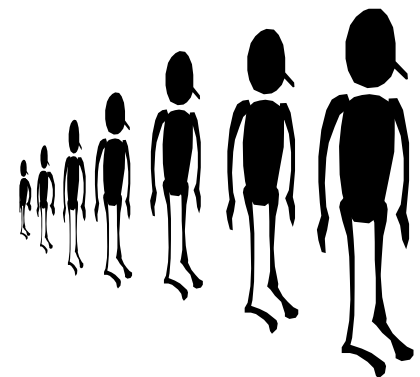
Amer. Indian – 1.2% Asian – 4.6% Black – 1.8% Hispanic – 4.4% Multi-Racial – 2% White – 86%

**Graduating Seniors’ Post High School Plans (Class of 2015):**

4-Year College	Tech College	Military	Employment	Seeking Employment/Other
39.9%	37.3%	4.2%	7.0%	11.6%

PUPIL SERVICES/SPECIAL NEEDS PROGRAMS (2015-16 Enrollment)			
Cognitive Disabilities	69	Speech/Language	159
Emotional Disabilities	111	Homebound	5
Learning Disabilities	178	Visually Impaired	4
Orthopedic Impairment	5	Hearing Impaired	4
Limited English Proficiency	87	Autism	64
Traumatic Brain Injury	1	Other Health Impaired	118
Significant Dev. Delay	31	<i>An Early Childhood program is also available.</i>	

Personnel (Number of Employees)	Number	FTE
Teachers, Librarians, Social Workers	376	371.64
Administrators	24	24.0
Psychologists, PT	8	6.4
Clerical/Aides	225	109.49
Custodial/Maintenance	46	45.63
Food Service	34	16.55
Nurses	3	2.1
Van Drivers	5	2.5
Technology Support	8	8.0
<b>TOTAL</b>	<b>729</b>	<b>586.31</b>



Financial Summary 2015-16 Budget	
Salaries	\$27,518,069.00
Employee Benefits	12,587,154.00
Purchased Services	6,612,482.00
Non-Capital Objects	1,718,875.00
Capital Objects	581,750.00
Debt Retirement	265,380.00
District Insurance	365,330.00
Transfer to Other Funds	7,929,338.00
Other	57,263.00
<b>TOTAL</b>	<b>\$57,635,641.00</b>

**Transportation (Public and Parochial)** of students is contracted with Lamers Bus Lines and Safe-Way Bus Transit. Approximately 3,040 young people are transported to and from school, traveling over 1.3 million miles each year at a cost of \$3,615,577.



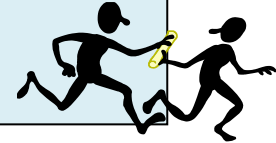
**Annual Cost Per Student: \$1,189      Per Vehicle: \$65,738**

### SCHOOL PERFORMANCE REPORT

Each year, public school districts in Wisconsin are required to prepare a school performance report outlining the previous year's success in a variety of areas. Specifically, districts are to report data in comparison with other districts in their athletic conference in the areas of *assessment, dropout rate, attendance, retention, graduation rate, habitual truancy, extra/co-curricular activities, community activities, Advanced Placement (AP) participation, post-graduation plans, suspensions, expulsions, staffing, financial data, etc.*

Individual School and District Report Cards and other school year information may be found by going directly to the Department of Public Instruction's [WISEdash](http://wisedash.dpi.wi.gov) website:

<http://wisedash.dpi.wi.gov/Dashboard/portalHome.jsp>



Expenditures Per Student	WRPS	State
2008-09	\$11,417	\$11,822
2009-10	\$12,225	\$12,087
2010-11	\$11,762	\$12,462
2011-12	\$12,497	\$11,802
2012-13	\$12,394	\$11,762
2013-14	\$11,890	\$11,970



Equalized Valuation		Tax Levy	
2010	\$2,130,794,877	2010	\$19,038,435
2011	\$2,159,872,687	2011	\$20,008,578
2012	\$2,142,632,655	2012	\$20,130,033
2013	\$2,120,646,624	2013	\$21,199,870
2014	\$2,101,846,262	2014	\$21,950,098
2015	\$2,120,646,624	2015	\$22,170,691

### **Equalized Tax Rate (Per \$1,000 of Equalized Value) Proposed:**

	09-10	10-11	11-12	12-13	13-14	14-15	15-16
General Fund	\$8.02	\$7.87	\$4.34	\$9.99	\$10.43	\$10.11	\$10.33
Debt Retirement	.53	1.20	5.05	.00	.01	.15	.13
Community Service	.38	.19	.00	.00	.00	.19	.11
<b>TOTAL Tax Rate</b>	<b>\$8.93</b>	<b>\$9.26</b>	<b>\$9.39</b>	<b>\$9.99</b>	<b>\$10.44</b>	<b>\$10.45</b>	<b>\$10.57</b>

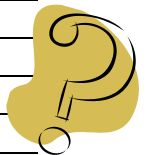


Revenue Sources	08-09	09-10	10-11	11-12	12-13	13-14	14-15
Local Sources	28.7%	32.7%	31.6%	35.7%	38.5%	39.3%	39.3%
State/Federal	71.3%	67.3%	68.4%	64.3%	61.5%	60.7%	60.7%

Municipality	2015 Valuation	2015 Tax Levy	Ratio
City of Wisconsin Rapids	\$995,524,400	\$10,490,819	46.4%
Town of Arpin	340,265	3,586	0.0%
Town of Grand Rapids	472,758,600	4,981,922	22.0%
Town of Hansen	28,522,599	300,571	1.3%
Town of Rudolph	60,447,000	636,989	2.8%
Town of Saratoga	168,489,735	1,775,542	7.9%
Town of Seneca	51,393,710	541,586	2.4%
Town of Sherry	8,433,167	88,869	0.4%
Town of Sigel	67,514,900	711,471	3.2%
Village of Biron	71,427,700	752,704	3.3%
Village of Rudolph	28,473,600	300,054	1.3%
Village of Vesper	26,170,900	275,788	1.2%
Town of Carson (Portage County)	7,307,958	77,011	0.3%
Town of Grant (Portage County)	130,798,485	1,378,352	6.2%
Town of Plover (Portage County)	28,567,738	301,046	1.3%
<b>TOTALS</b>	<b>\$2,146,170,757</b>	<b>\$22,616,310</b>	<b>100.0%</b>

**Do you have a question? Please call:**

<b>Assessment</b>	<i>Kathi Stebbins-Hintz</i>	715-424-6721
<b>Athletics – HIGH School</b>	<i>Bill Vickroy</i>	715-424-6760
<b>Athletics – JR. HIGH School</b>	<i>Patti Ritchay</i>	715-424-6730
<b>Athletics – MIDDLE School</b>	<i>Brian Oswald</i>	715-424-6740
<b>ATOD Prevention Coordinator</b>	<i>Matthew Green</i>	715-424-6724
<b>Attendance Line</b>	<i>District Wide</i>	715-424-6765
<b>Budget/Finance</b>	<i>Dan Weigand</i>	715-424-6705
<b>Buildings and Grounds</b>	<i>Ed Allison</i>	715-424-6718
<b>Computer Technology/IT Department</b>	<i>Phil Bickelhaupt</i>	715-424-6715
<b>Curriculum Standards and Instruction</b>	<i>Kathi Stebbins-Hintz</i>	715-424-6721
<b>Food Service</b>	<i>Lizzie Severson</i>	715-424-6703
<b>Four-Year Old Kindergarten</b>	<i>Kelly Schaeffer</i>	715-424-6721
<b>Gifted &amp; Talented Educational Svcs</b>	<i>Tina Wallner</i>	715-424-6769
<b>Homeless Liaison</b>	<i>Heather Lisitza</i>	715-424-6735
<b>Human Resources</b>	<i>Ryan Christianson</i>	715-424-6710
<b>Professional Development</b>	<i>Kathi Stebbins-Hintz</i>	715-424-6721
<b>Special Education</b>	<i>Glenn Haupt</i>	715-424-6724
<b>Superintendent</b>	<i>Dr. Colleen Dickmann</i>	715-424-6701
<b>Title IX Indian Education Coordinator</b>	<i>Matthew Green</i>	715-424-6724
<b>Transportation/Buses</b>	<i>Jody Gruber</i>	715-424-6704
<b>Virtual Program</b>	<i>Ryan Christianson</i>	715-424-6710





## QUICK FACTS

- South Wood County area **population** = 45,759
- WRPS District “**Exceeds Expectations**” on last published School Report Card and had **highest score** in Wisconsin Valley Conference and Wood County
- Number of WRPS teachers winning the **Kohl Fellowship Award** since 1991 = 53
- Lincoln High School was **named to** the College Board’s 5<sup>th</sup> Annual **AP® District Honor Roll**
- Number of WRPS students winning the **Kohl Excellence Award** since 1990 = 17
- Lincoln High School offers **Transcribed Credit** through MSTC, and **Dual Enrollment Credit** through UW-Marshfield/Wood County
- Over the past 2 years, Lincoln High students earned **125 college credits** at a **savings of \$14,000**
- Number of WRPS teachers with **National Board Certification** Designation = 7
- Grove, Howe, and Mead Received the Wisconsin **School of Recognition Award** numerous years in a row
- Howe Elementary recognized as a **Spotlight School** for **multiple years** by Dept. of Public Instruction
- Amount District secured in various **grant funding** in 2014-15 = \$4,511,039.32
- Each year WRPS students and staff **give generously** by donating large amounts of **food products, dollars,** and **volunteer time** to help the less fortunate in our community

## ◆ DISTRICT BELIEFS ◆

**WE BELIEVE...***each student is the first consideration of the educational process.*

**WE BELIEVE...***all students can learn.*

**WE BELIEVE...***learning is a life-long process.*

**WE BELIEVE...***in a safe, caring, and respectful learning environment.*

**WE BELIEVE...***all students should become effective citizens of the community, state, nation, and the world.*

**WE BELIEVE...***meaningful home, school, and community involvement is vital to continuous improvement.*



*The Board of Education of the Wisconsin Rapids Public Schools offers fair and equal employment and learning opportunities, and prohibits discrimination. Properly trained and qualified personnel will assist the Board by developing, implementing, and monitoring procedures related to nondiscrimination practices. No student, employee or applicant will be discriminated against on the basis of age, race, creed, religion, disability, marital or parental status, gender, sexual orientation, gender identity, transgender status, national origin, ancestry, citizenship, arrest record, pregnancy, membership in the national guard, state defense force or any other reserve component of the military forces of the United States or Wisconsin, or use or nonuse of lawful products off District premises and away from District-sponsored activities, as required by law.*